

NORTHERN VIRGINIA RAIL ROADING

BY JOEL SALMONS

NORTHERN VIRGINIA NTRAK, THE AMERICAN CIVIL WAR RAIL
ROAD HISTORICAL SOCIETY (NMRA SIG)



Figure 1 Layout on the road

The layout is a selectively compressed Union Street track plan which is based on the historic U.S. Army Quartermaster Plans drawn during the war and which are available in the Alexandria Library special collections open map files.

The module will be on display at the upcoming N Scale East convention. Where there will be a clinic on making a uniquely loaded flat car with pontoon boat from the battle of Fredericksburg. For those that wish to avail themselves of the opportunity to own one of these unique cars at the clinic we have a kit available for purchase and there will be a clinic on tips and techniques for modeling ACW cars and a presentation on overstations.

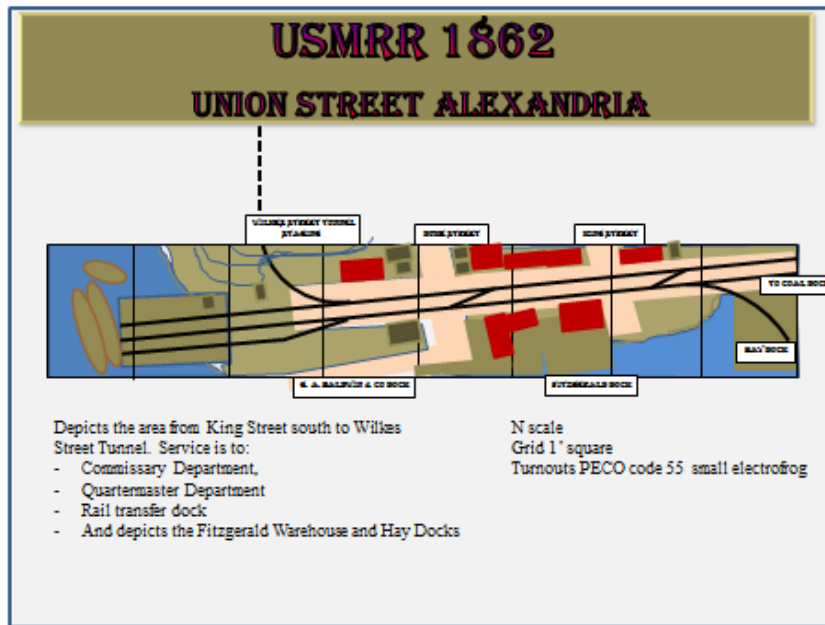
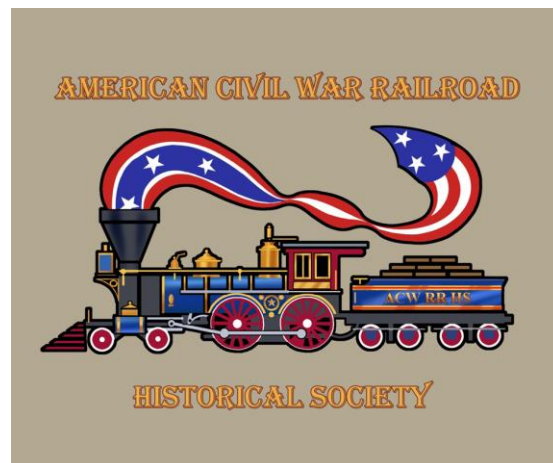


Figure 2 Alexandria Layout Plan

This is the first installment on designing and building an N scale Civil War era operating diorama set in Alexandria Virginia, on the Union Street and Strand street. Alexandria has always been a railroad town and during the civil war it was the location of the Headquarters of the Army Quartermaster's - United States Military Railroads (USMRR). It also housed the rail water transfer operations which are modeled on my layout. The date is set in late fall 1862 prior to the battle of Fredericksburg.

As a work in progress my layout is years from completion, but the portable section is in a good state for traveling display. It has been featured in the Model Railroad Magazine on line video coverage of the American Civil War Rail Road's (ACWRR) Historical Society's NMRA SIG room during the 2013 NMRA convention held in Atlanta Georgia.



Membership in the ACWRR Historical Society is really helpful if you are modeling the period and communications through their YAHOO site can speed up research into this period. Below is a photo of D.C. Cebula the founder, they can be reached at: https://groups.yahoo.com/neo/groups/Civil_War_RRs



D.C and some of his ACW rail road collection.

Getting started in N Scale Civil War model railroading is easy. As my good friend and fellow Alexandrian, Bernie Kempinski says modeling the American Civil War in N Scale is easier than HO or O because of the availability of readymade products. Of course his marvelous layout of the Aquia Line and the portable McCook's Landing layout are both reflective of the fine craftsmanship that can be found in O Scale. You can check out these two great Civil War layouts at Bernie's Blog: <http://usmrr.blogspot.com/>



Figure 3 O Scale to N Scale picture on Bernie's layout

MODELING

Let me start by saying when you decide to do historic modeling based on rail roading in the ACW you will have many resources available from the excellent online collections of both the National Archives and the Library of Congress. As you advance the hard copy archived documents contained in the National Archives are

invaluable. This resource is the result of general MacCallum who had the USMRR records boxed up and sent to the War Department in the Quartermaster Archives. Fortunately they were subsequently passed onto the National Archives in Washington D.C. where they now reside and are available for reference.

Online the Library of Congress (LOC) has many fine pictures in the high resolution TIG format many of which were shot by the USMRR official photographer Captain Russell and his crew. He subsequently went on in railroad photography and recorded the construction of the Union Pacific. His photographs captured many detailed technical images of techniques and projects which are remarkable considering he was using the time consuming collodion process. This photographic process is capable of recording fine detail can be zoomed in on in a way that the old standby book "Civil War Railroads: A Pictorial Story of the War Between the States, 1861-1865" by George B. Abdill could have only dreamed of. From the LOC collections I call special attention to the photographs Russell's documentation of the USMRR in Virginia.

The amount of remaining USMRR documents, physical evidence remaining in Alexandria and the remarkable high definition photographs by Russell and others make scene development easy. This is the next scene going in to the layout. The Wilkes Street Tunnel is the rail connection between the Orange and Alexandria yard and the Union Street commercial and wharf district.

For my modeling I have found that Russell took some wonderful pictures around Alexandria of the extensive rail operations during the war which are invaluable to modeling. I had already built the tunnel as it

exist today when I found the below picture in one of Russell's' Albums which is in the Huntington Library collection which makes it available online. Wilkes Street Tunnel to Union Street with USMRR Locomotive Senator depicted during the war

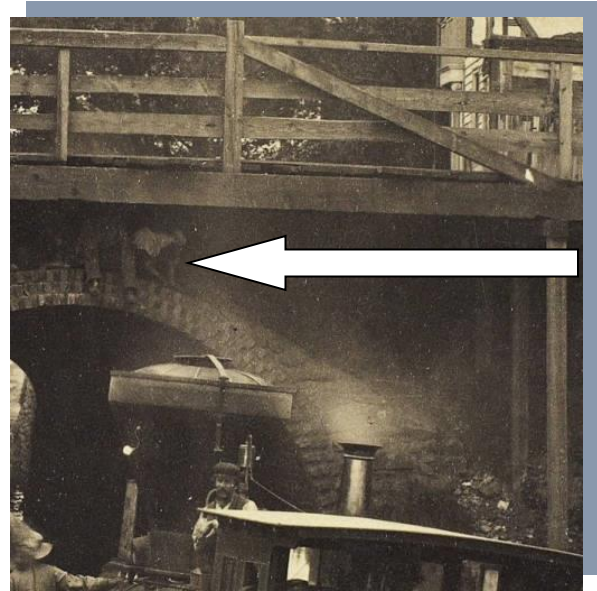


The Wythe Street tunnel

On closer viewing you can enlarge the HD level detail the image and can see that there are three boys who have climbed on top of the unfinished tunnel arch. This detail is too good to pass up and so I whacked out the tunnel and I'm now modeling the above scene for the module.

Please note some of the detail in the photograph. First is the locomotive which is the Senator an Amosskeg locomotive works product purchased for the USMRR. Second it has a backup light on the tender a feature that is also seen on several other USMRR locomotives in Alexandria.

But what really caught my eye was what was revealed when enlarged...

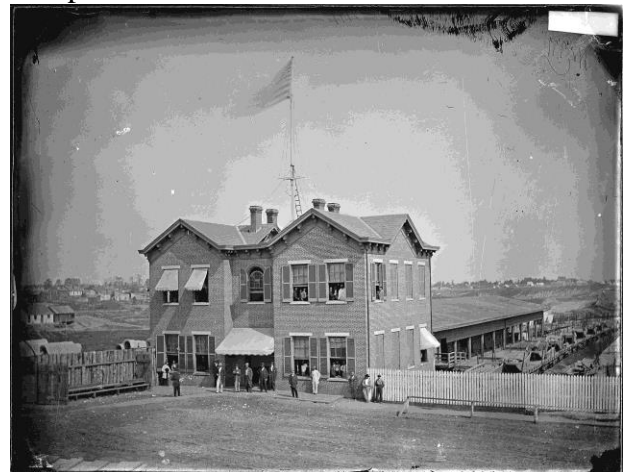


Boys on top of tunnel arch

CLINIC

The layout time period selected was late fall early winter of 1862. This was a busy time because the military line of operations was still along the old Orange and Alexandria and I had an opportunity to model a unique train. One of the photographs in the LOC shows a number of flat cars with pontoon boats on them sitting in the rail yard at the Quartermaster Depot (Alexandria, Loudon and Hampshire). I decided to replicate the Army's pontoon train on flat cars enroute from the Harper's Ferry Arsenal to Fredericksburg to support the Army of the Potomac's river crossing in late 1862.

The photo of the event:



In this N scale modeling project we will be using flat cars from Marshall Thompson at Republic Locomotive Works, who has the N scale production rights to the O/HO scale ACW models from BTS models. When called he took on the risk and graciously produced a series of cars to include box, flat, caboose, livestock and express when I called him which are currently available on his web site.



Flat Cars, pontoons and trucks and couplers

The trucks and working link and pin couplers are by Eric Cox and are available from his Shapeways store.

Flat cars are from Republic locomotive works, pontoon boats are from micro trains and tricks and link and pin couplers are from Eric Cox's Shapeways Panamint site...and the result is:



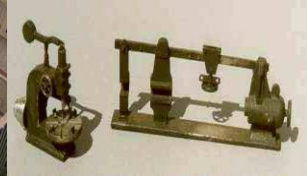
N Scale ACW Sources:

Republic Locomotive Works

Prop: Marshall Thompson
16 Little Cape Horn
Cathlamet WA 96612
(360) 577-6479

<https://www.republiclocomotiveworks.com>

See the ACW line and detail parts which is licensed from the HO/O scale BTS line:



Thoroughbred Models

4106 Timberland Drive, Portsmouth, VA
23703
(757) 686-1048

<http://www.thoroughbredmodels.com/EagleTens.htm>

See the Eagle 10's Line for ACW Civilians, Naval Crewmen and large naval guns



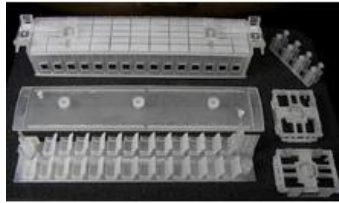
Panamint Models:

Prop: Eric Cox

Eric Cox" Email: mmkec@aol.com

Shapeways 3D printing shop, contact Eric before ordering and he helps in the order process <http://www.shapeways.com/shops/panamintmodels>

[shapeways.com/shops/panamintmodels](http://www.shapeways.com/shops/panamintmodels)



Micro Trains:

351 Rogue River Parkway •

P.O. Box 1200, Talent, OR 97540-1200

USA

Phone: 541.535.1755 • Fax: 541.535.1932

<http://www.micro-trains.com/>

Line of ACW cars and laser cut buildings and boats

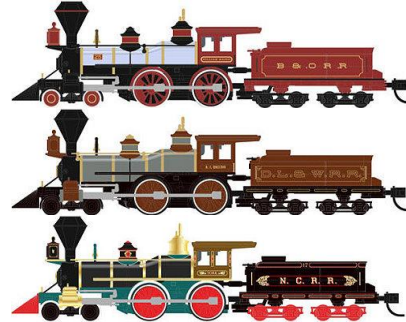


Atlas Model Railroad Co, Inc

<http://atlasrr.com/>

(908)-6870880

Currently the second run is available with new roads and Micro Trains has released one for the USMRR. I converting to DCC use the smallest decoder you can find.



The last run of the 2-6-0 Mogul Steam Locomotive was March 2006

Note: MB Kline's web site

<http://www.modeltrainstuff.com/> is a supplier for



Quality products for discriminating modelers working in the small scales

Which make

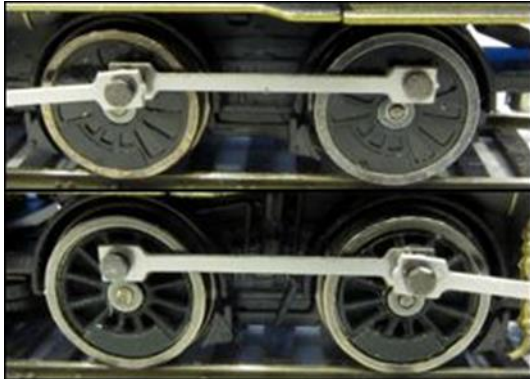
a detail kit for the Atlas 4-4-0

ND-022: Atlas 4-4-0 American N Scale Locomotive Detailing Upgrade Kit

The Atlas 4-4-0 American is a beautiful new N Scale locomotive. Unfortunately, they made an inexplicable decision about the design of the drivers: the spokes are in relief so shallow that they're barely visible. NZT decided to address the problem with ND-022, which includes replacement wheel inserts, as well as a back wall for the cab (which the model does not have) and glazing for all of the cab.

Before

After



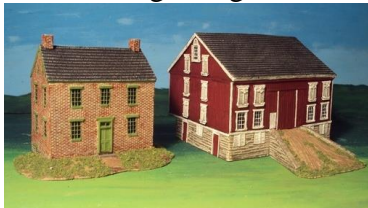
Buildings in Turmoil

John and Jeff Mayer

Email us at bnturmoil@yahoo.com

<http://www.buildings-in-turmoil.com/gettysburg-1863>

They make excellent models of Gettysburg 1863 and other ACW sites. Their buildings are U.S. N scale 1/160 and compatible with 10mm war gaming.



GHQ

28100 Woodside Road
Shorewood, MN 55331 USA

Phone: 612-374-2693

Fax: 952-470-4428

Orders: 1-800-289-1945

<http://www.ghqmodels.com/>

Email customerservice@ghqmodels.com

See their Micro Force 10mm® American Civil War N-Scale Figures which are 1/160 U.S. N scale models.



Pendracken

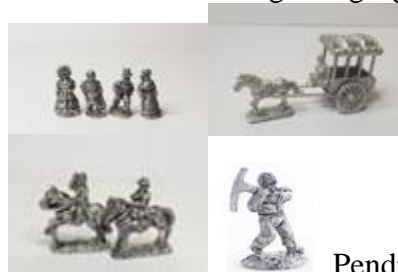
1 Easby Gr. Eston

Middlesbrough, North Yorkshire
TS6 9DL, UNITED KINGDOM

Tel: (01642) 460638

<http://www.pendracken.co.uk>

See their ACW lines which include many useful parts such as a generic 19th C. working party, civilians, wagons as well as inactive soldiers and horses in addition to the more active war gaming figures.



Pendracken also make Civil war ships in N scale ACWS01 USS Weehawken (PEN) \$26.50 ACWS02 CSS Atlanta (PEN) \$26.50 ACWS03 USS Carondelet (PEN) \$26.50, ACWS04 USS Mamora Tinclad (PEN) \$26.50

MUSKET MINIATURES



Musket Miniatures, LLC, P.O. Box 1976
Broomfield, CO 80038

303.439.9336

email at musketmin2@Q.com

They have a great line of civilian figures, animals, wagons and military figures for the ACW period.

Perrin Miniatures and Noble Fine scale Miniatures

5944 Odana Road
Madison, Wisconsin
53719, UNITED STATES
(608) 819-0312

(866) 776-6739 [toll free]

URL <http://nobleminis.com/>

They produce the Gettysburg Line of 1/160 10mm U.S. military miniatures with several useful military and camp life accessories for modeling.

Magister Militum

Unit 4

The Business Centre
Morgans Vale Road
Redlynch

Salisbury

SP5 2HA, UNITED KINGDOM

Tel: 0044 (0)1725 510110

<http://www.magistermilitum.com/>



See their 10mm Chariot ACW line which is a good match for 1/160 U.S. N Scale

Baggage Train

10 Lynfield Close

Connah's Quay

Deeside

Flintshire

Wales

CH5 4TR, UNITED KINGDOM

sales@the-baggage-train.co.uk

<http://the-baggage-train.com/>

See their useful sets of wagons and boats.



NST- N scale Early American and European structures are available from: Jerry's Hobby Junction, 25420 Pleasant Valley Dr., Richland Center, WI 53581. Email: jhobby@country-speed.com. Phone: 608-647-8196. Website:

www.jerryshobbyjunction.com



See Also Lindberg Models who make a 1/163, Robert E. Lee steamboat model which is a good match at 1/163 scale. It however is big, really big and will dominate a scene if used.

Jim Brokow also makes some really good models of buildings and ships to included appropriate tugs and steam ships but he is not manufacturing at the moment.